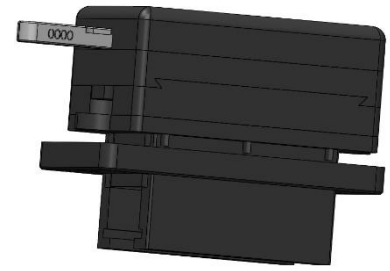


Mounting Instruction

OBD-Saver

intended for the following vehicle

Mazda CX-3 ; CX-5



Description :

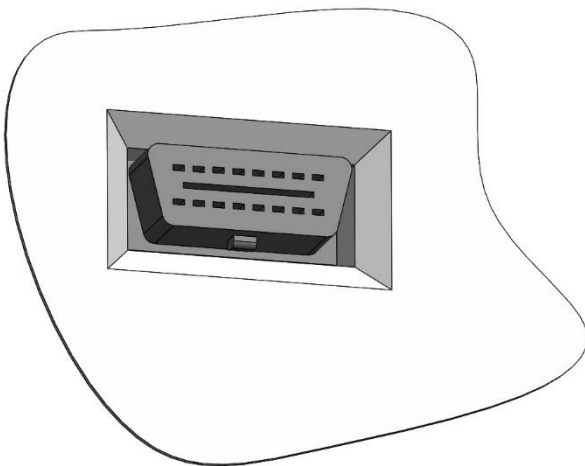
The OBD Saver disables effectively every access to ECUs via OBD – Interface (e.g. electronic immobilizer). The OBD – interface is locked with the OBD Saver. Thus connecting any device to the OBD interface is impossible and the connection to the car therefore denied.

When locked by the OBD Saver your car is protected very effectively. The control unit which controls the ignition of your car cannot be deactivated via OBD. From this time on your car will only start with the original ignition keys!

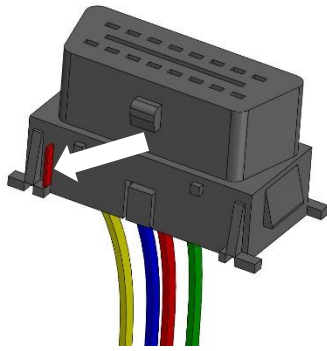
Scope of delivery :

- 1x OBD-Saver enclosure including the lock
- 2x keys
- 1x allen wrench 2,5 / 3
- 1x mounting bracket / 2x fillister head screw M5
- 3x allen wrench M3 + 1x spare screw
- 2x window sticker

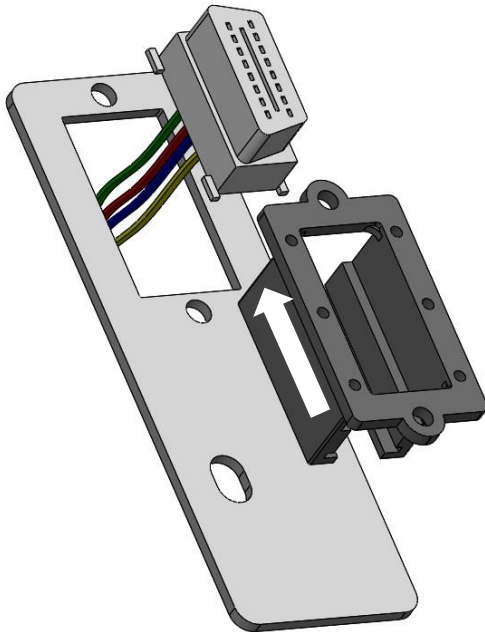
Mounting :



- remove the original OBD socket jack from its housing

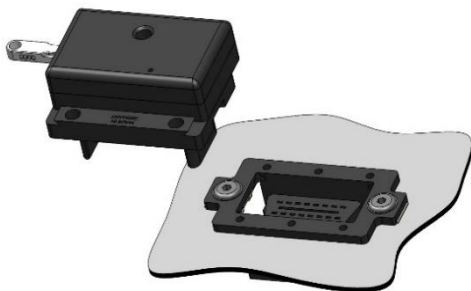


- remove the plastic lug marked red (e.g. with a sharp knife)

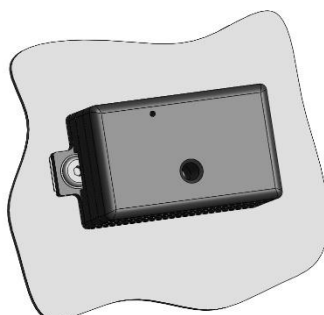


- push the socket jack into the OBD-Saver housing. (The socket jack – barbs have to be fully pressed into the housing!)
- mount both (housing and socket jack) onto the mounting bracket with the provided fillister screws
- mount the 3 parts (mounting bracket with lower OBD Housing & OBD socket jack) with the car frame

→ see pictures on the following pages



- Plug in the lock and fix it with the provided M3 screws
- Close the OBD-Saver and remove the key





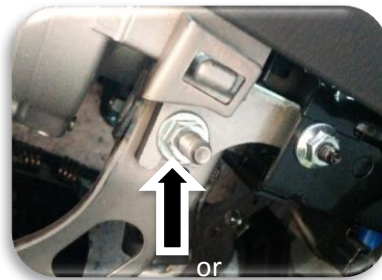
Remove the stacker by pulling



remove the plastic lug on the OBD jack



Stacker removed



Manual Gearbox
Loosen the nut
then push the
plate onto the
thread >tighten
the nut



Automatic – use
the included
screw



Open the training clip



Push the OBD
jack through
the plate hole



Remove OBD jack
by pressing down
the lug



Put the OBD
housing and the
jack together



Bolt the OBD housing & jack together with the housing



Plug on the lock and screw it together



Close the OBD saver and remove the key